

CLI-MAX

COOL.HEAT.DEHUMIDIFY / WWW.GROW-PRO.CO.ZA

CONTENTS

Environmental Control Equipment

1. Cli-Max Series

1.1 Inverter Water Cooled MAX-5.0 Combo Series

1.2 Air Cooled MAX-5.0 Combo Series

1.3 Air Cooled Chiller MAX-6.0 HFO Series

2. Cli-Max FAO2 Series

3. Inline Duct Air Exchange Fan

4. Fresh Air Purification Box

5. Ozone Generator

3/5 YEAR WARRANTY

(Details on Request)

Cli-MAX is a Division of GrowPro (Pty) Ltd

METROPOLITAN BUILDING
1ST FLOOR. BLOCK B
PARKTOWN
GAUTENG
2193

HOWZIT@GROW-PRO.CO.ZA
WWW.GROW-PRO.CO.ZA

CONTACT US

CONSISTENT CROPS START WITH A STABLE ENVIRONMENT....

...with **Cli-Max**, what once seemed impossible is now the new standard!

8 Hillside Road, Parktown, Gauteng, 2193,
South Africa

howzit@grow-pro.co.za

www.grow-pro.co.za



Hi there! Need any technical assistance? We're here to help you grow

Jonathan Zeederberg
Head of Cultivation



Feel free to ask about warranties and shipping times. I'm happy to assist!

Courtney McKay
Operations Manager

INVERTER WATER COOLED MAX

5.0 COMBO SERIES

- 1. EASY INSTALLATION:** Quick and straightforward setup.
- 2. INTEGRATED DEHUMIDIFICATION:** Professional-grade dehumidification built-in.
- 3. ENERGY-EFFICIENT DEHUMIDIFICATION:** There is no water consumption during dehumidification, as the air outlet temperature is higher than the indoor temperature, reducing the need for frequent use of electric heaters and saving energy.
- 4. LOW ENERGY CONSUMPTION:** The inverter technology reduces electricity costs.
- 5. SMART CONTROL SYSTEM:** The all-in-one intelligent optical control system automatically adjusts cooling, heating, and dehumidification based on light intensity, temperature, and humidity.
- 6. FREE HOT WATER:** The system provides hot water at no extra cost while cooling.
- 7. CERTIFIED QUALITY:** European CE certification ensures top-quality performance, popular with major customers in Europe.
- 8. RELIABLE PERFORMANCE:** Dependable efficiency with options for standard and extended warranty packages.

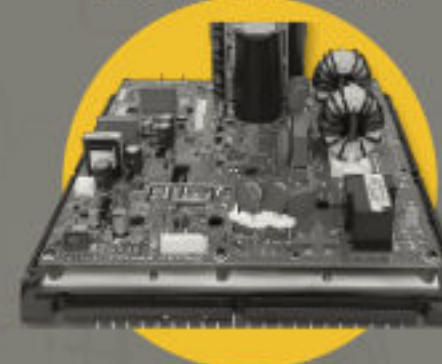
INVERTER
FAN



INVERTER
COMPRESSOR



INVERTER
DRIVER



INVERTER
CONTROL SYSTEM



INVERTER WATER COOLED MAX 5.0 COMBO SERIES *Specifications*

Item	Unit	6000 PRO5 (INV)	10500 PRO5 (1P) (INV)	10500 PRO5 (3P) (INV)	16000 PRO5 (INV)	30000 PRO5 (INV)
Cooling capacity	KW	6	10.5	10.5	16	30
Rated input power	KW	1.11	1.93	1.93	2.92	5.43
Electrical Heater	KW	2×1.5	2×2.0	2×2.0	2×2.0	3×3.0
Dehumidification Capacity	l/h	2.2	3.4	6	8.6	12.2
Power Supply		220V/50Hz/1Ph	220V/50Hz/1Ph	380V/50Hz/3Ph	380V/50Hz/3Ph	380V/50Hz/3Ph
Compressor Type		Rotary			Scroll	
Compressor Quantity	Qty	1	1	1	1	1
Refrigerant		R410A				
Protection		High/low pressure protection, over-heat protection, over-current protection, water-break protection				
Air flow	m3/h	1,200	2,000	2,000	2,600	6,000
Power	W	100	275	275	450	1,100
Static pressure	Pa	30	40	40	40	40
Cooling Water Flow	m3/h	0.25	0.32	0.32	0.5	1.2
Cooling Water Flow (Connect chiller)	m3/h	1.4	2.4	2.4	3.4	7
Cooling Water Pipe		DN20	DN20	DN20	DN20	DN32
Noise	dB(A)	50	58	58	58	62
Net dimension (L×W×H)	mm	1068×644×475	1408×695×550	1408×695×550	1408×762×550	2170×1090×771
Net weight	Kg	90	120	120	130	260

AIR COOLED MAX 5.0 COMBO SERIES

- 1. DURABLE HEAT EXCHANGER:** Constructed with a corrosion-resistant alloy heat exchanger for a service life exceeding 20 years.
- 2. HIGH-PERFORMANCE COMPRESSOR:** Utilizes a high insulation grade compressor to ensure normal operation even under high-temperature conditions.
- 3. OUTDOOR INSTALLATION:** Designed for outdoor installation, it frees up indoor space. Users only need to install the air duct without connecting refrigerant pipes.
- 4. LOW ENERGY CONSUMPTION:** The inverter technology reduces electricity costs.
- 5. PROFESSIONAL DEHUMIDIFICATION:** Equipped with professional-grade dehumidification.
- 6. FLEXIBLE INSTALLATION OPTIONS:** Flexible installation options allow it to be wall-mounted or floor-installed.
- 7. INTELLIGENT CONTROL:** Featuring intelligent control with day and night modes, dehumidification, cooling, heating, and circulating ventilation functions, requiring no special monitoring.

DIURABLE

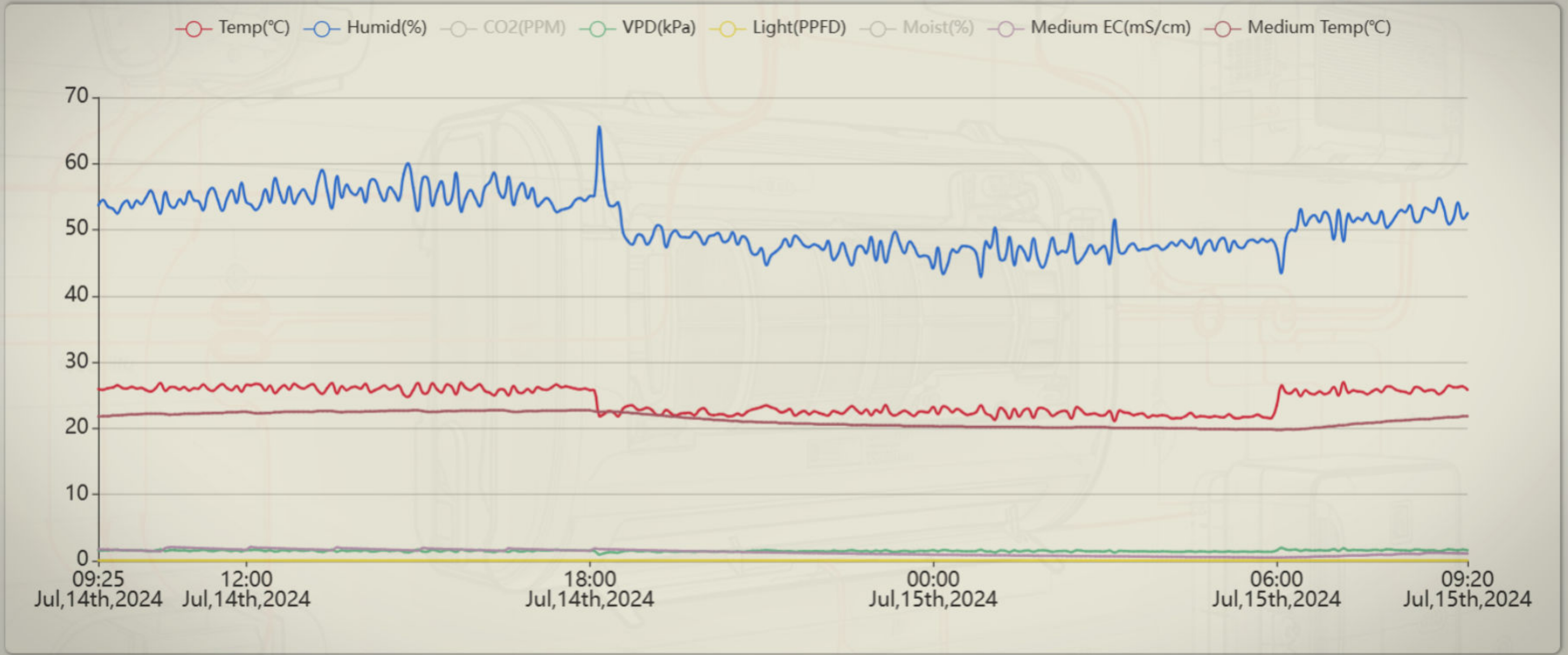


SUPER
HIGH-PERFORMANCE!

AIR COOLED MAX 5.0 COMBO SERIES *Specifications*

Item	Unit	7000 PRO5	9000 PRO5	10500 PRO5	15000 PRO5	17500 PRO5	21000 PRO5	26000 PRO5	30000 PRO5	35000 PRO5	70000 PRO5	
Cooling Capacity	kW	7	9	10.5	15	17.5	21	26	30	35	70	
Dehumidification Capacity	L/D	178	224	261	396	462	549	679	792	927	1,854	
Electrical Heater (Options)	kW	1×1.5	1×1.5	2×2.0	2×2.0	2×2.0	2×3.0	2×3.0	4×2.0	4×2.0	4×3.0	
Cooling Input Power	kW	1.95	2.5	2.91	4.15	4.84	5.8	7.18	8.25	9.63	19.3	
Heating Capacity (Heat pump type only)	kW	7.5	9.5	11	16.5	19.5	23	28	32.5	37.9	76	
Heating Input Power (Heat pump type only)	kW	2.08	2.6	3	4.5	5.18	6.27	7.6	8.8	10.3	20.66	
Rated Air Flow Volume	m3/h	1,400	1,800	2,200	3,000	3,400	4,200	5,200	5,600	6,000	12,300	
Max Static Pressure	Pa	30	40	40	50	50	60	60	60	60	100	
Compressor Type		Rotary	Rotary/Scroll			Scroll						
Compressor Quantity	Quantity	1	1	1	1	1	1	1	1	1	2	
Condenser/Evaporator		Hydrophilic Blue Fin; Innergroover tube type										
Power Supply		220V/1P/50Hz			220V/1P/50Hz							
Refrigerant		R417A / R410A										
Noise	dB(A)	46	48	50	54	56	58	60	62	62	70	
Net Dimension (LxWxH)	mm	650*540*1840	650*560*1840	700*575*1840	840*620*1840	920*645*1840	1220*690*1840	1600*740*1840	1650*1270*1365	1650*1270*1365	2530*1993*1130	
Net Weight	kg	135	162	180	225	250	285	340	380	400	760	
Packing Dimension (LxWxH)	mm	730*620*1990	780*655*1990	920*700*1990	1680*820*1990	2030*880*1990	1000*725*1990	1950*800*1840	2030*880*1990	1730*1350*1515	2610*2073*1280	
Gross Weight	kg	155	182	200	250	275	320	370	420	450	825	

REAL-TIME DATA FROM INDOOR GROW ROOMS *Specifications*



AIR COOLED CHILLER MAX 6.0

HFO SERIES

- 1. INTELLIGENT OPTICAL CONTROL:** The system determines the operation of cooling, heating, or dehumidification based on light intensity, temperature, and humidity.
- 2. SPACE AND INVESTMENT SAVINGS:** Single outdoor chiller to run multiple indoor cli-max units, saving both space and investment.
- 3. EFFICIENT LOAD BALANCING:** The PRO6 maintains high efficiency under both full load and partial load conditions.
- 4. RENOWNED COMPRESSOR AND QUIET OPERATION:** Equipped with world-renowned brand scroll compressors and high-efficiency low-noise damping fans, ensuring excellent stability and reliability.
- 5. ECO-FRIENDLY REFRIGERANT:** Uses HFO-R1234yf refrigerant, with a GWP of less than 5, resulting in almost zero carbon emissions.

REDUCE INVESTMENT REQUIREMENTS !

HIGHLY EFFICIENT!



THE INDOOR UNIT CAN HAVE A VARIETY OF OPTIONS ACCORDING TO CUSTOMER SPECS



AIR COOLED CHILLER MAX 6.0 HFO SERIES

Specifications

Parameter (Single Speed/Double Speed Optional)

Model	Air volume	Input power	Power	ESP	Noise
H-RP220	220 m ³ /h	220V/50Hz	35W	150 Pa	31 dB
H-RP540	540 m ³ /h	220V/50Hz	75W	300 Pa	38 dB
H-RP900	900 m ³ /h	220V/50Hz	130W	380 Pa	43 dB
H-RP1450	1450 m ³ /h	220V/50Hz	225W	480 Pa	50 dB
H-RP2900	2900 m ³ /h	220V/50Hz	320W	630 Pa	65 dB

Parameter (Single Speed/Double Speed Optional)

Model	Air volume	Input power	Power	ESP	Noise
H-SQ450	450 m ³ /h	220V/50Hz	60W	150 Pa	32 dB
H-SQ800	800 m ³ /h	220V/50Hz	150W	200 Pa	32 dB
H-SQ1350	1350 m ³ /h	220V/50Hz	200W	250 Pa	39 dB
H-SQ2500	2500 m ³ /h	220V/380V 50Hz	350W	300 Pa	48 dB
H-SQ3000	3000 m ³ /h	220V/380V 50Hz	400W	400 Pa	48 dB
H-SQ4000	4000 m ³ /h	220V/380V 50Hz	450W	450 Pa	50 dB

CM-FA02 EVAPORATIVE COOLER SERIES

- 1. DUAL-STAGE COOLING:** Utilizes a 1st stage indirect heat exchanger and a 2nd stage direct evaporative cooling for maximum efficiency.
- 2. SUPREME COMFORT:** IDEC mode provides optimal humidity levels, adding moisture when it's dry.
- 3. PREDICTIVE PERFORMANCE:** Accurately forecasts system performance and energy consumption.
- 4. VERSATILE ENERGY-SAVING AIR CONDITIONER:** Suitable for a wide range of environments, offering significant energy savings.
- 5. HEALTHIER AIR QUALITY:** Ensures 99% fresh air control without additional cooling load.
- 6. HIGH-PERFORMANCE EVAPORATIVE COOLING:** The most practical and highest performing evaporative cooling system available in the market.
- 7. PATENTED INNOVATION:** Protected by patent ensuring unique product features (details available on request).

**DUAL-STAGE COOLING FOR
ULTIMATE EFFICIENCY AND COMFORT.**

DUAL STAGE



CM-FA02 EVAPORATIVE COOLER SERIES *Specifications*

	Unit	CMFAO2-50	CMFAO2-125	CMFAO2-250
Power Supply		220V ~ 50/60Hz	3N ~ 380V 50/60Hz	
Cooling Capacity	USRT	5 RT	12.5 RT	25 RT
	KW	17.5 KW	43.75 KW	87.5 KW
Air Flow	CFM	2500(4250m3/h)	5000(8500m3/h)	10000(17000m3/h)
Rated Input Power	KW	2.35	3.4	5.56
Rated Input Current	A	10.7	6.1	10
External Static Pressure	Pa	120	300	350
Water Consumption	L/H	40	100	185
Water Pressure	Mpa	0.2 ~ 0.6	0.2 ~ 0.6	0.2 ~ 0.6
Water Gap Spec	inch	3/4"	1"	1-1/4"
Noise	dB(A)	≤70	≤80	≤85
Protection Grade		II	II	II
Waterproof Class		IP×4	IP×4	IP×4
Net Weight	kg	265	500	880
Gross Weight	kg	280	540	920
Net Dimension (L×W×H)	mm	1240*1120*1185	1690*2283*1314	1690*2283*2300
Packing Dimension (L×W×H)	mm	1260*1160*1210	1750*2343*1474	1750*2343*2460

INLINE DUCT AIR EXCHANGE FAN

- 1. DURABLE MATERIAL:** Made from ABS+PC+UV+94VO flame-retardant plastic, suitable for outdoor installation, overcoming installation limitations.
- 2. EFFICIENT TURBINE DESIGN:** Aviation turbine blade design ensures high wind pressure and airflow efficiency.
- 3. POWERFUL MOTOR:** The "surging power" motor delivers ultra-high wind pressure up to 650Pa and an air volume of 180 ~ 2500m³/h.
- 4. WATERPROOF STRUCTURE:** Independently developed high-density waterproof design for stable operation in humid and harsh environments.
- 5. EASY MAINTENANCE:** The housing and motor can be disassembled separately, making maintenance and cleaning convenient.
- 6. QUICK INSTALLATION:** Features a 2-minute installation process with sealing, shock absorption, and fastening for convenience

**DURABLE
MATERIALS**

SMOOTH OPERATION



Model	Air volume	Input power	Power	ESP	Noise
H-RP220	220 m3/h	220V/50Hz	35 W	150 Pa	31 dB
H-RP540	540 m3/h	220V/50Hz	75 W	300 Pa	38 dB
H-RP900	900 m3/h	220V/50Hz	130 W	380 Pa	43 dB
H-RP1450	1450 m3/h	220V/50Hz	225 W	480 Pa	50 dB
H-RP2900	2900 m3/h	220V/50Hz	320 W	630 Pa	65 dB

FRESH AIR PURIFICATION BOX

1. DURABLE METAL SHELL: Precision anti-rust treatment ensures long-lasting protection.

2. ENHANCED AIRFLOW: Fluid mechanics diversion structure increases air volume by 30% and reduces noise by 10%.

3. NOISE REDUCTION: Built-in aviation-grade sound-absorbing cotton and high-density flame-retardant material convert sound energy into heat, effectively attenuating noise.

4. HIGH-EFFICIENCY MOTOR: German multi-winding motor efficiently converts heat energy into kinetic energy, achieving an efficiency of up to 98%.

5. VERSATILE AIR VOLUME OPTIONS: Offers a range of air volumes from 120m³/h to 4000m³/h.

6. CUSTOMIZABLE STYLES:

- **Purification Type:** Features a 3 to 4-layer filter core with a purification rate up to 99%.
- **Dual Channel Type:** Can simultaneously replenish fresh air and exhaust indoor dirty air.

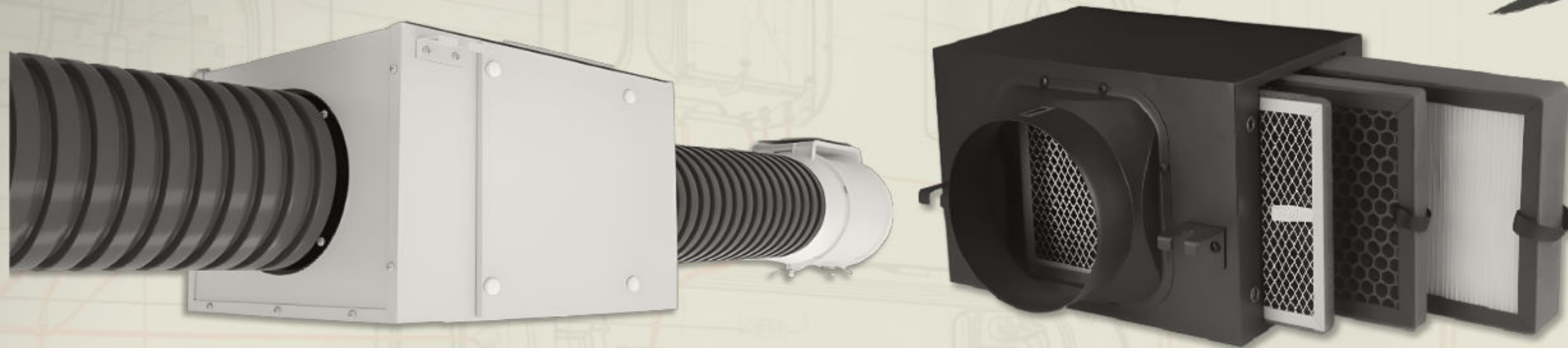
GERMAN BUILT WINDING MOTOR

ALL METAL SHELL



Model	Air volume	Input power	Power	ESP	Noise
H-SQ450	450 m3/h	220V/50Hz	60 W	150 Pa	32 dB
H-SQ800	800 m3/h	220V/50Hz	150 W	200 Pa	32 dB
H-SQ1350	1350 m3/h	220V/50Hz	200 W	250 Pa	39 dB
H-SQ2500	2500 m3/h	220V/380V 50Hz	350 W	300 Pa	48 dB
H-SQ3000	3000 m3/h	220V/380V 50Hz	400 W	400 Pa	48 dB
H-SQ4000	4000 m3/h	220V/380V 50Hz	450 W	450 Pa	50 dB

FRESH AIR PURIFICATION BOX



3-LAYER PURIFICATION FILTER

PRIMARY FILTER

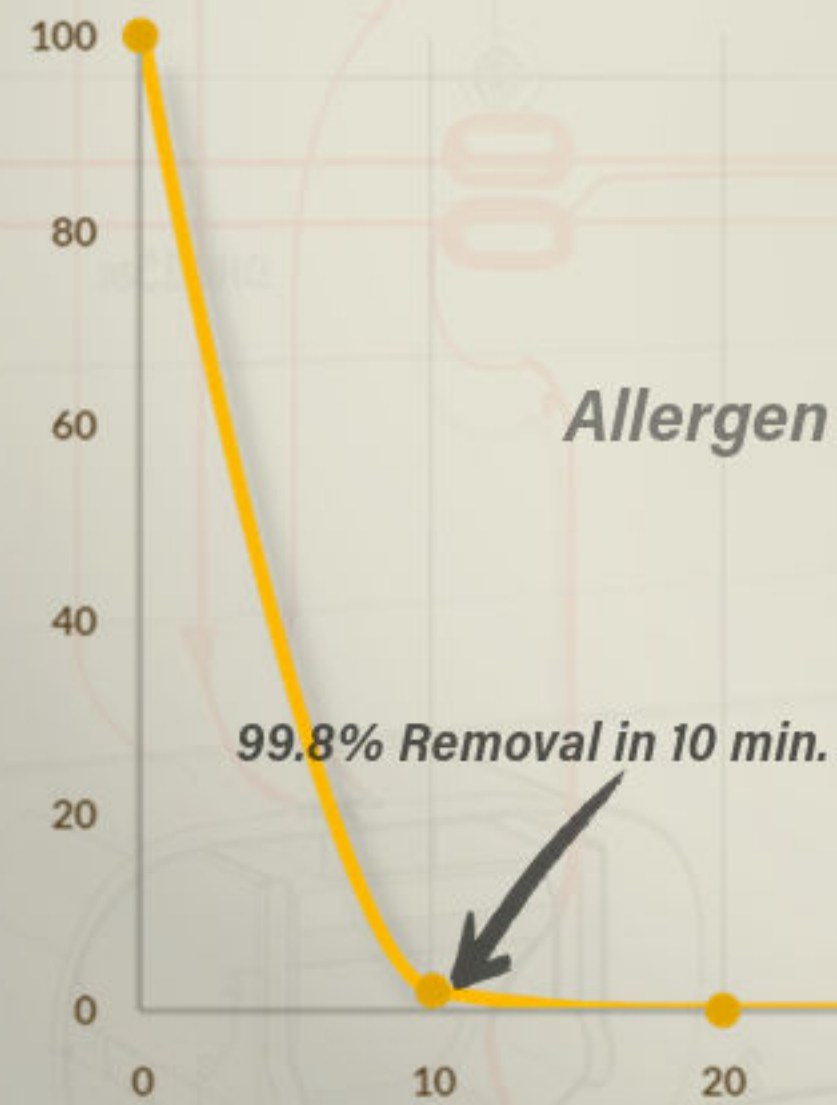
Filter dust, pollen, hair, etc.

ACTIVATED CARBON FILTER

Special treated granular activated carbon to absorb strong odours and intercept bacteria.

HEPA FILTER

Filter dust, smoke, bacteria, PM2.5, etc.



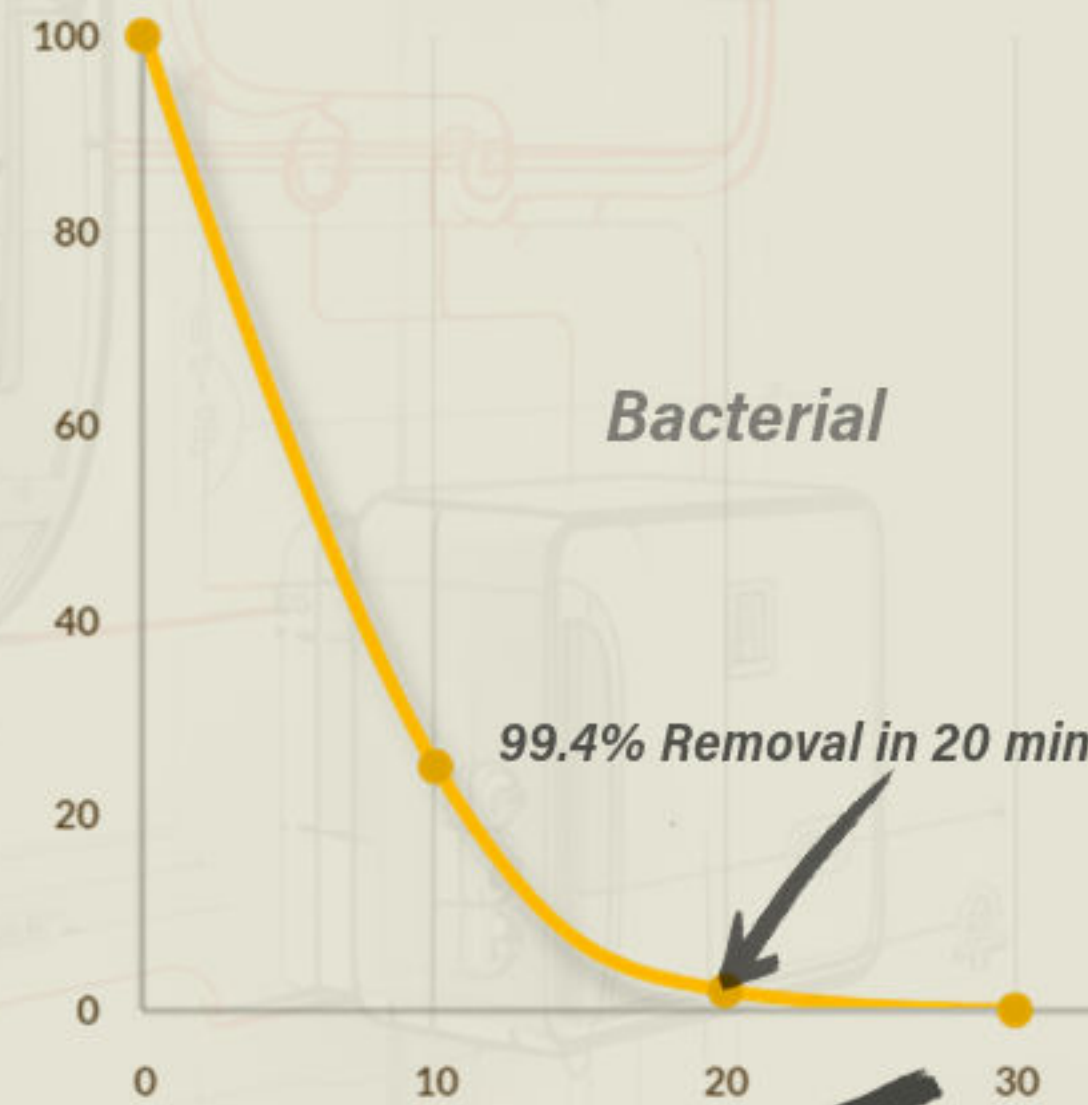
Allergen

99.8% Removal in 10 min.



PM.5

99.8% Removal in 10 min.

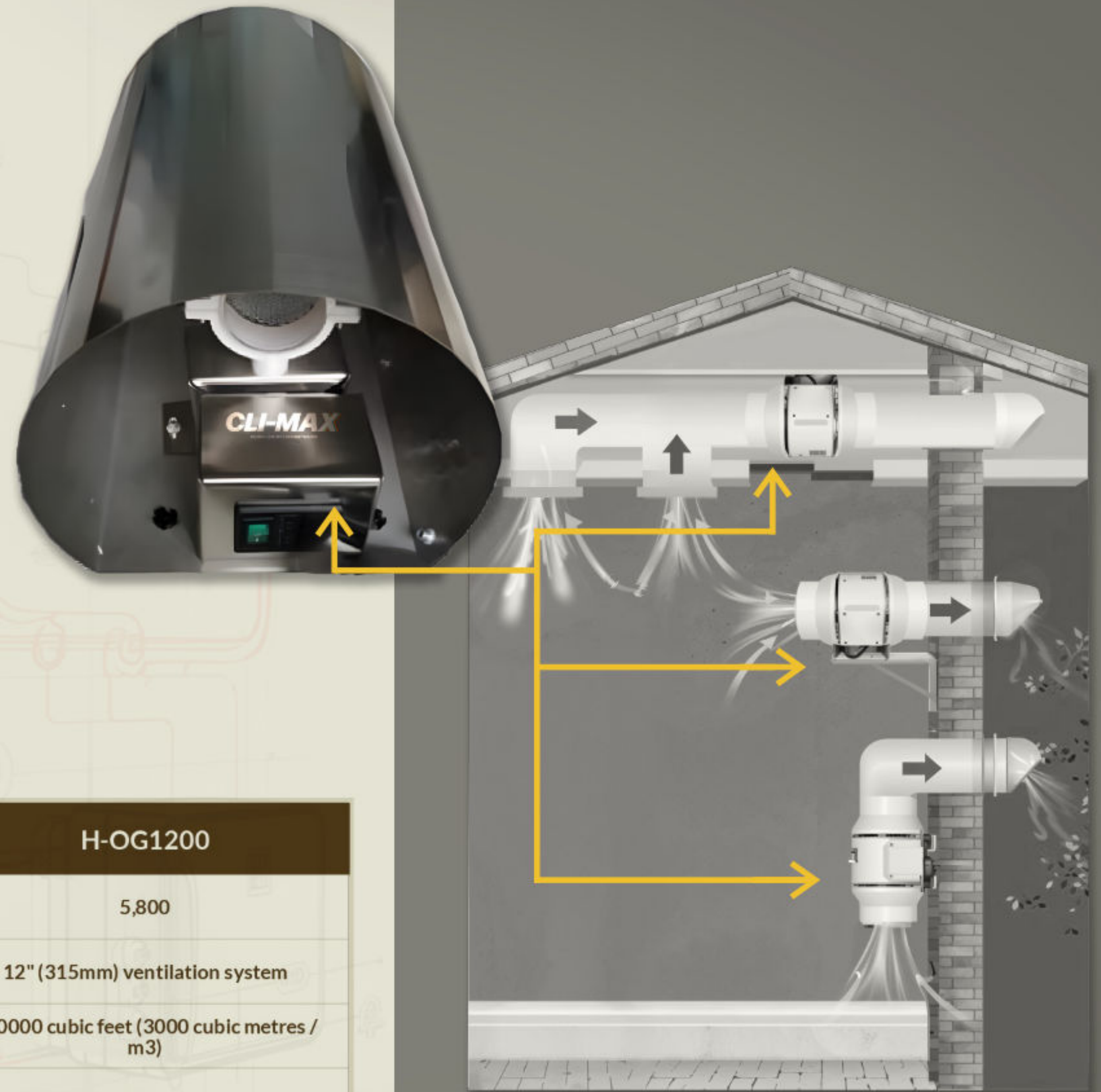


Bacterial

99.4% Removal in 20 min.

CLI-MAX OZONE GENERATOR

- 1. DURABLE METAL SHELL:** Precision anti-rust treatment ensures long-lasting protection.
- 2. EFFECTIVE ODOUR REMOVAL:** The Cli-MAX Ozone Generators effectively eliminate odours from a grow room environment, purifying the air in the ventilation system before it exits the ducting.
- 3. ENHANCED SECURITY:** When used in conjunction with a carbon filter, it adds an extra layer of security, preventing unwanted odours from escaping the duct work.
- 4. OPTIMIZED FOR GROW ROOMS:** Developed specifically for grow room environments, Cli-MAX Ozone Generators maintain high levels of ozone and match the size and airflow through various duct works.



Model	H-OG80	H-OG1000	H-OG1200
Ozone production (mg/hour)	270	3,000	5,800
Suitable for	8" (20 cm) ventilation system	10" (25cm) ventilation system	12" (315mm) ventilation system
Suitable for spaces	5000 - 10000 cubic feet (150 - 300 cubic metres / m3)	40000 cubic feet (1200 cubic metres / m3)	100000 cubic feet (3000 cubic metres / m3)
Reduces odors	Yes	Yes	Yes
Inhibits mould and bacteria	Yes	Yes	Yes